

## KITTITAS COUNTY COMMUNITY DEVELOPMENT SERVICES

411 N. Ruby St., Suite 2, Ellensburg, WA 98926

cds@co.kittitas.wa.us

Office (509) 962-7506

Fax (509) 962-7682

"Building Partnerships – Building Communities"

### **NOTICE OF APPLICATION**

(Pursuant to Kittitas County Code 15A.03.060)

**To:** Interested Departments & Agencies with Jurisdiction  
Adjacent property owners  
Applicant

**From:** **Jeff Watson, Staff Planner**

**Date:** **5/13/2009**

**Subject:** **Hendrick Short Plat, SP-09-00008**

---

On April 27, 2009, Shawn Hedrick, landowner, submitted a Short Plat land use application which was deemed complete on May 13, 2009 by Kittitas County Community Development Services staff. The application is for a 4 lot Short Plat subdivision pursuant to Kittitas County Code 16.32 on approximately 26.5 acres of land that is zoned Commercial Agriculture. The subject property is located east of the City of Ellensburg, west of North Ferguson Road, east of No. 6 Road, and south of the Kittitas Highway, in a portion of Section 8, T17N, R19E, WM in Kittitas County, bearing Assessor's map numbers 17-19-08052-0002 and 17-19-08030-0008. See attached vicinity map. No other permits are associated with this Short Plat.

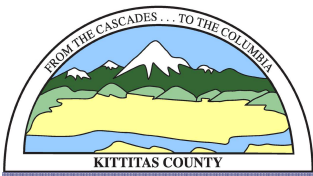
The complete submitted application and related filed documents may be examined by the public at the Community Development Services office at 411 N Ruby Street, Suite 2, Ellensburg, WA 98926, as well as on the Community Development Services website at [www.co.kittitas.wa.us/cds/current/](http://www.co.kittitas.wa.us/cds/current/). If you do not have internet access, or are unable to view the complete application at Community Development Services in person, one will be mailed on request.

Under Title 15A.03.080, Short Plat Projects are processed in an abbreviated administrative format, which does not involve a public hearing. All comments will be considered in the decision making process, and any person has the right to comment on this application and receive notification of the Community Development Services administrative decision, once made. Appeals to an administrative land use decision may be filed within 10 working days with the board of county commissioners as outline in Chapter 15A.07 of the Kittitas County Code. The current appeal fee is \$500<sup>00</sup>.

All comments on this application must be addressed to the designated permit coordinator at :

Attn: **Jeff Watson**  
Kittitas County Community Development Services  
411 N Ruby Street, Suite 2  
Ellensburg, WA 98926

**SEE REVERSE SIDE FOR ADDITIONAL INFORMATION**



# KITTITAS COUNTY COMMUNITY DEVELOPMENT SERVICES

411 N. Ruby St., Suite 2, Ellensburg, WA 98926

cds@co.kittitas.wa.us

Office (509) 962-7506

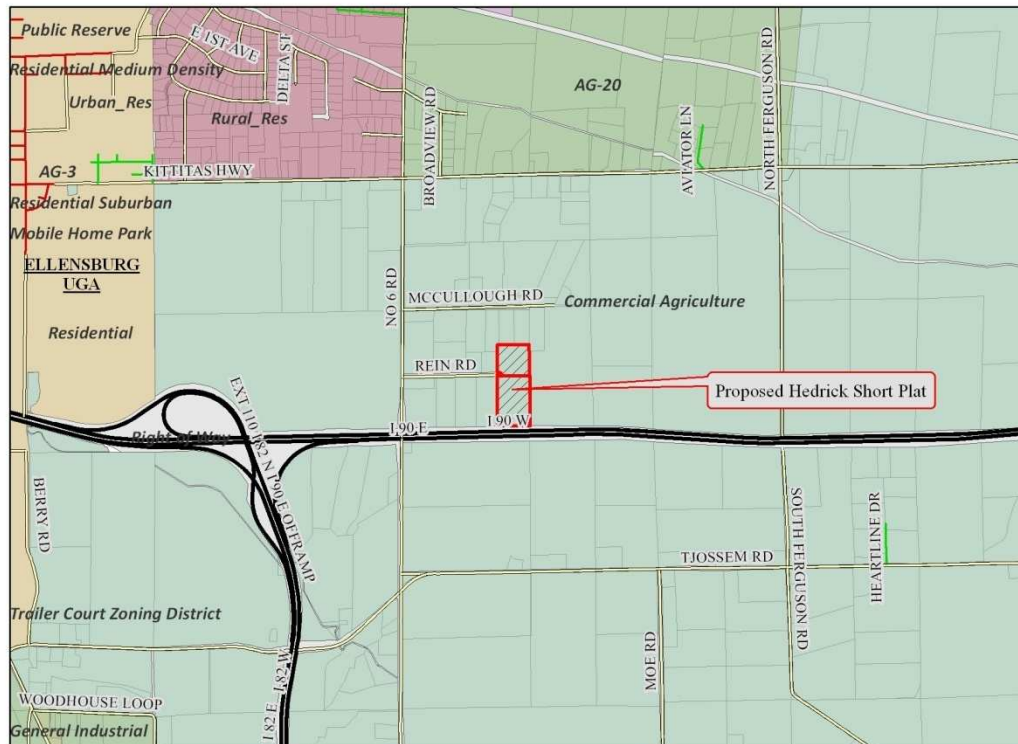
Fax (509) 962-7682

"Building Partnerships – Building Communities"

The 15 day comment period as outlined in Table A at the end of Title 15A of the Kittitas County Code, will terminate on **June 2nd, 2009 at 5:00 pm.**

If you have any questions regarding the proposed project outlined above, or the application process, please contact Community Development Services at (509) 962-7506.

## Vicinity Map



**SEE REVERSE SIDE FOR ADDITIONAL INFORMATION**